



# THE PUZZLING SIDE OF CHESS

Jeff Coakley

## HOW YOU WERE INVERTED

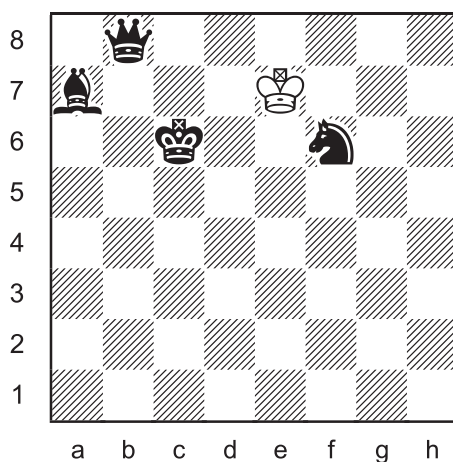
### Diving Head First

number 96

February 20, 2016

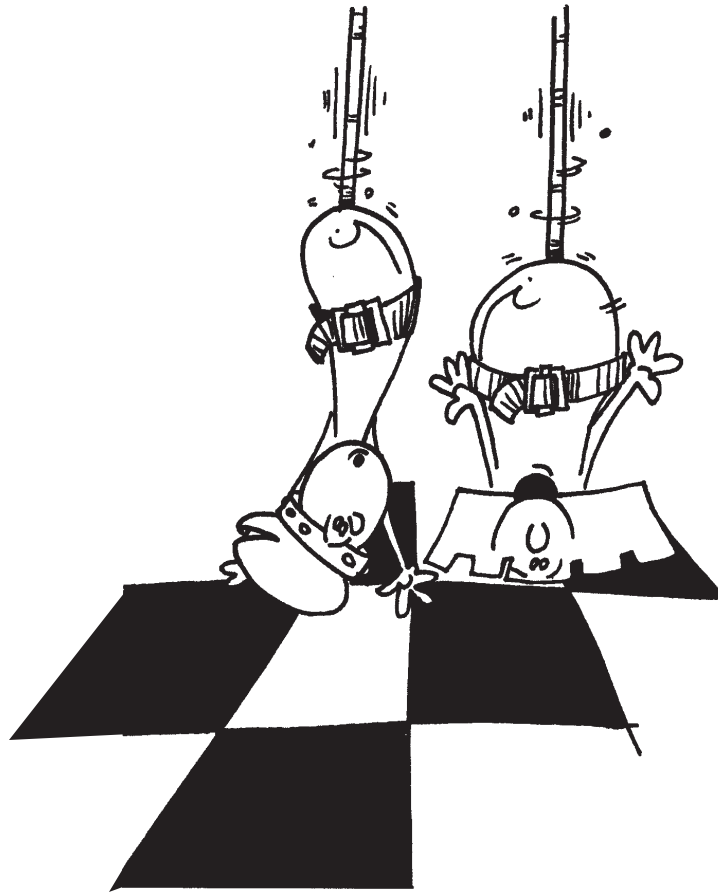
This week's column features four *inverted loyds*. In each puzzle, the task is to add a white rook and two bishops to the position so that White has a mate in one move.

### Inverted Loyd 20



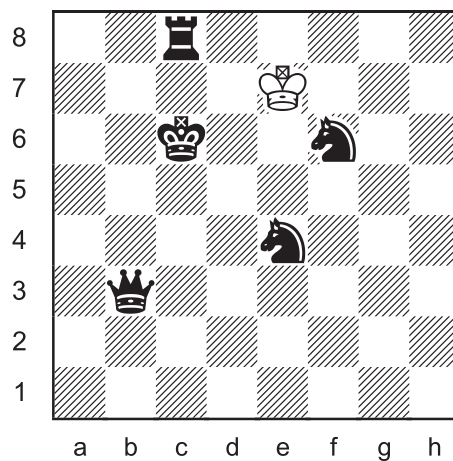
Place a white rook and two bishops on the board so that White has mate in 1.

The name "inverted loyd" is derived from another puzzle called the *triple loyd*, in which the white pieces are already on the board and the black king is added, a problem type invented by Sam Loyd. For more information, see columns 1 and 5 in the archives.



It probably goes without saying, but in the position after the pieces are added, the black king may not be in check.

### Inverted Loyd 21

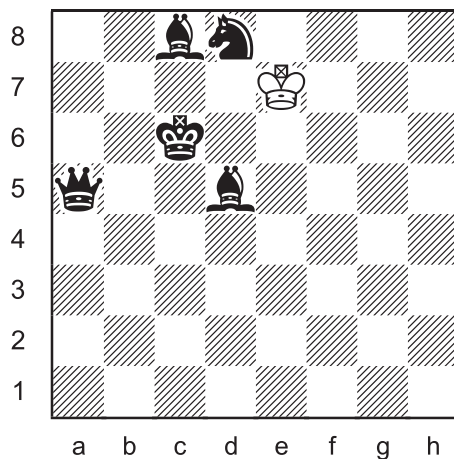


Place a white rook and two bishops on the board so that White has mate in 1.



*Padres vs. Pirates*

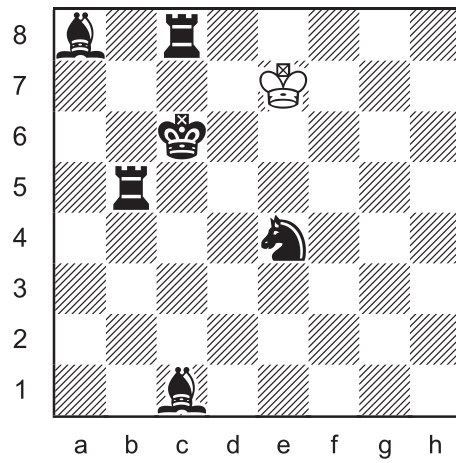
**Inverted Loyd 22**



Place a white rook and two bishops on the board so that White has mate in 1.

The problems in this column are not twins, but they all have the white king on e7 and the black king on c6, so they could be considered “cousins”.

## Inverted Loyd 23



Place a white rook and two bishops on the board so that White has mate in 1

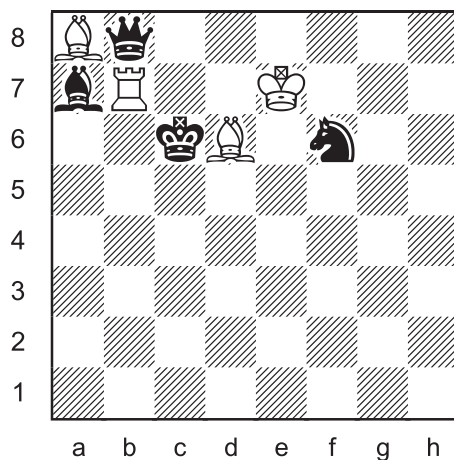


## SOLUTIONS

All problems by J. Coakley. *Puzzling Side of Chess* (2016).

*PDF hyperlinks.* You can advance to the solution of any puzzle by clicking on the underlined title above the diagram. To return to the puzzle, click on the title above the solution diagram.

### Inverted Loyd 20

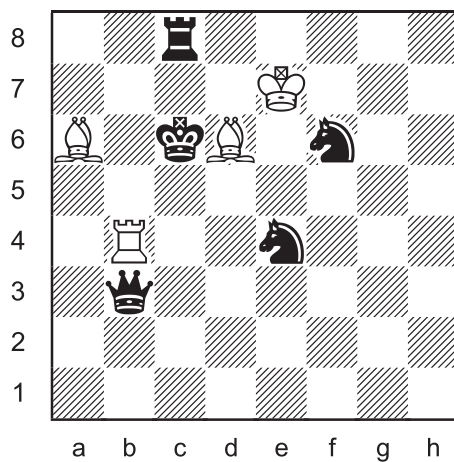


Rb7, Ba8, Bd6 were added.

1.Rxb8#

Disco check and capture.

### Inverted Loyd 21

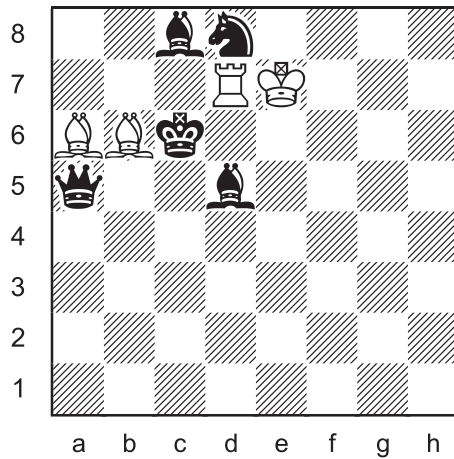


Rb4, Ba6, Bd6 were added.

1.Bb7#

Another king bites the dust.

## Inverted Loyd 22

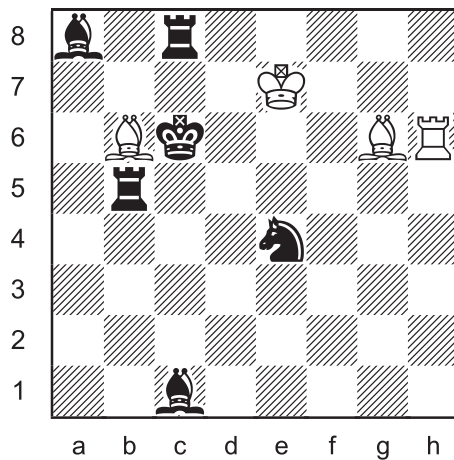


Rd7, Ba6, Bb6 were added.

1.Rd6#

Everybody get in line.

## Inverted Loyd 23



Rh6, Bb6, Bg6 were added.

1.Bxe4#

Double check does the trick.

Until next time!

© Jeff Coakley 2016. Illustrations by Antoine Duff. All rights reserved.