



THE PUZZLING SIDE OF CHESS

Jeff Coakley

HOW YOU WERE INVERTED

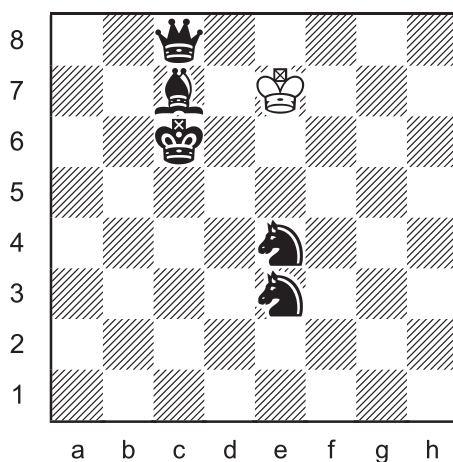
Hands Down

number 101

March 26, 2016

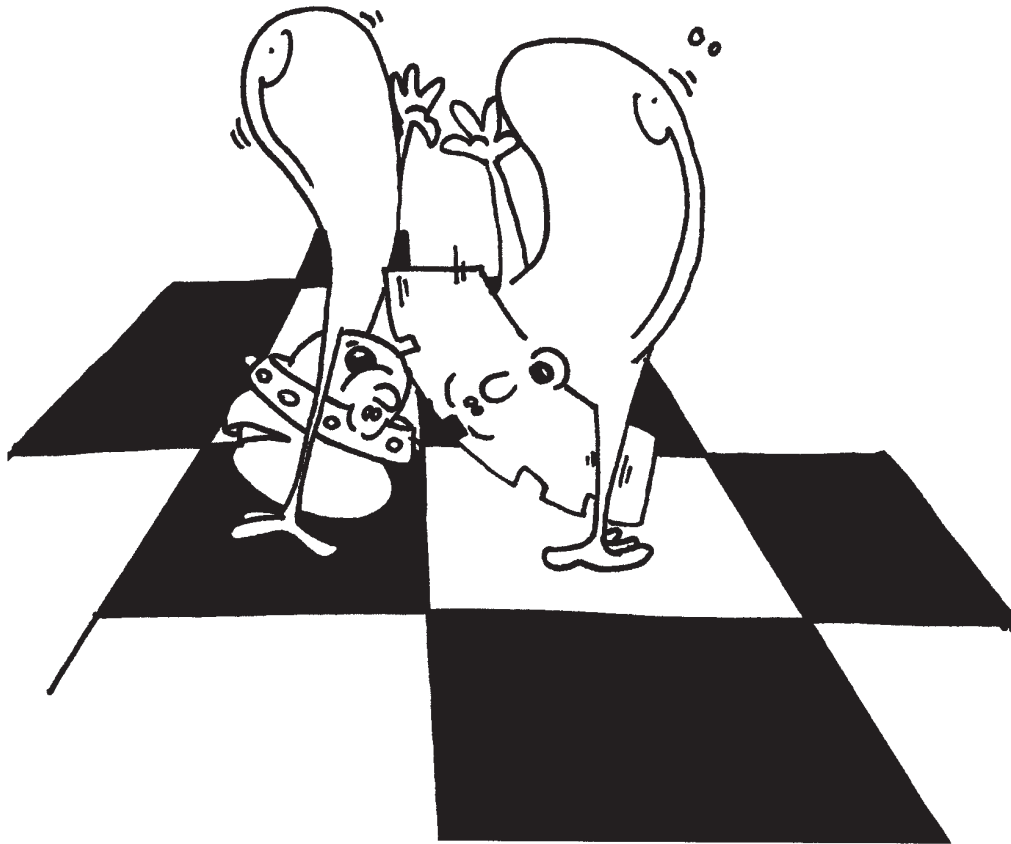
This week's column continues a theme from last month, with four more *inverted loyds*. In each puzzle, the task is to add a white rook and two bishops to the position so that White has a mate in one move.

Inverted Loyd 24



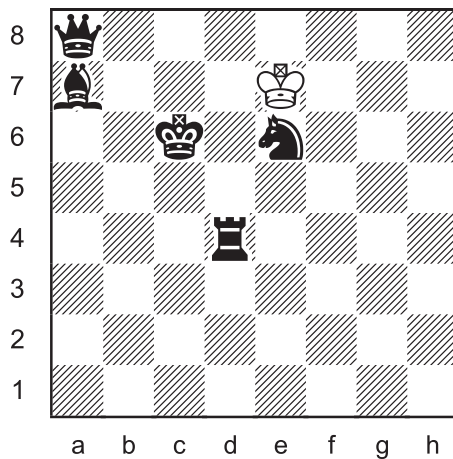
Place a white rook and two bishops on the board so that White has mate in 1.

The name "inverted loyd" is derived from another puzzle called the *triple loyd*, in which the white pieces are already on the board and the black king is added, a problem type invented by Sam Loyd. For more information, see columns 1 and 5 in the archives.



As all experienced “loyders” know, in the position after the pieces are added, the black king may not be in check.

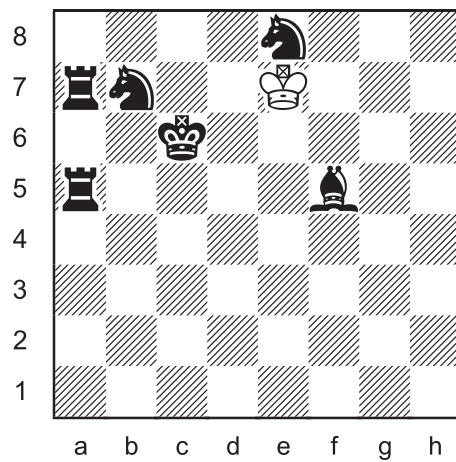
Inverted Loyd 25



Place a white rook and two bishops on the board so that White has mate in 1.



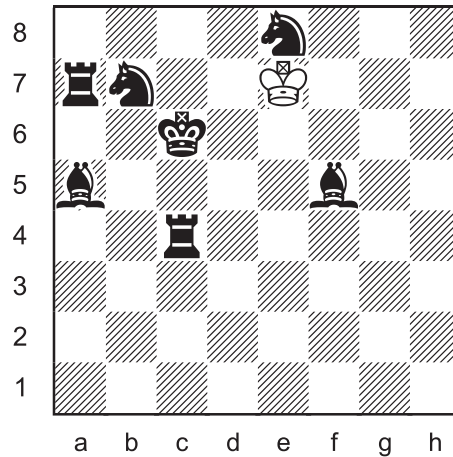
Inverted Loyd 26



Place a white rook and two bishops on the board so that White has mate in 1.

The problems in this column are not twins, but they all have the white king on e7 and the black king on c6, just like those in column 96. The whole lot are “cousins”. And there are more to come in May.

Inverted Loyd 27



Place a white rook and two bishops on the board so that White has mate in 1



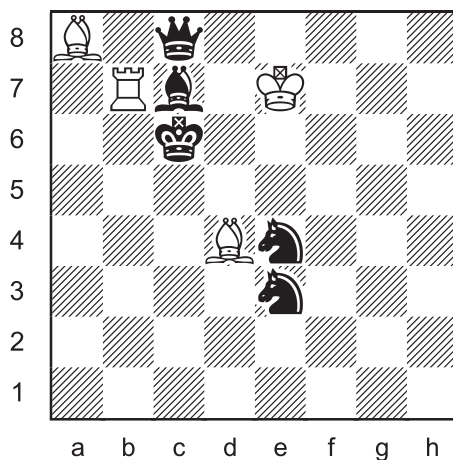
Sitting up to catch down on some reading.

SOLUTIONS

All problems by J. Coakley. *Puzzling Side of Chess* (2016).

PDF hyperlinks. You can advance to the solution of any puzzle by clicking on the underlined title above the diagram. To return to the puzzle, click on the title above the solution diagram.

Inverted Loyd 24

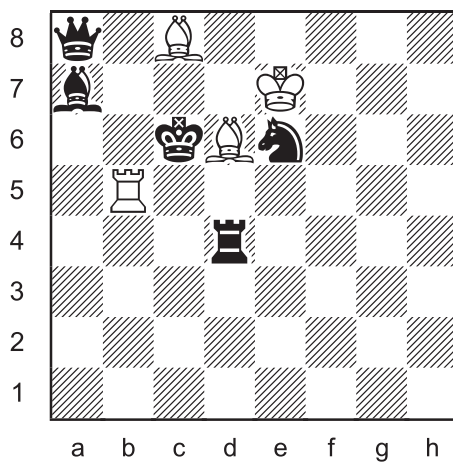


Rb7, Ba8, Bd4 were added.

1.Rb6#

Double check and mate.

Inverted Loyd 25

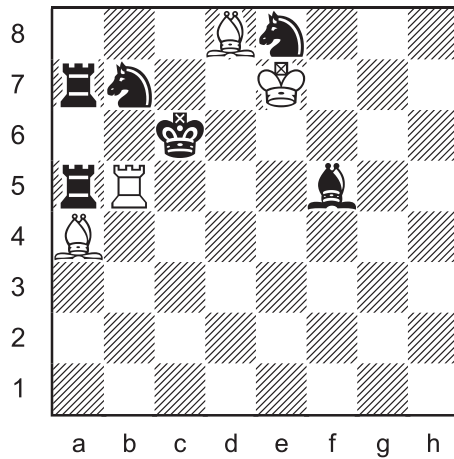


Rb5, Bc8, Bd6 were added.

1.Bd7#

X-ray protection for the rook from the checking bishop.

Inverted Loyd 26

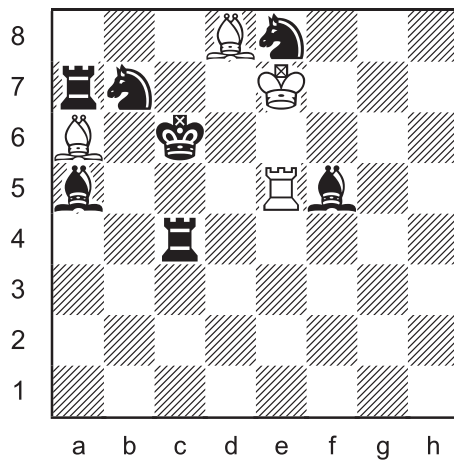


Rb5, Ba4, Bd8 were added.

1.Rxa5#

Overpowering the royal guards.

Inverted Loyd 27



Re5, Ba6, Bd8 were added.

1.Bb5#

Six defenders are not enough.

Until next time!

© Jeff Coakley 2016. Illustrations by Antoine Duff. All rights reserved.