



THE PUZZLING SIDE OF CHESS

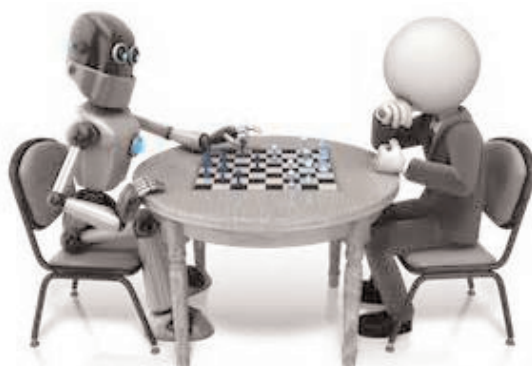
Jeff Coakley

ANDROIDS, LOYDS, and VOIDS

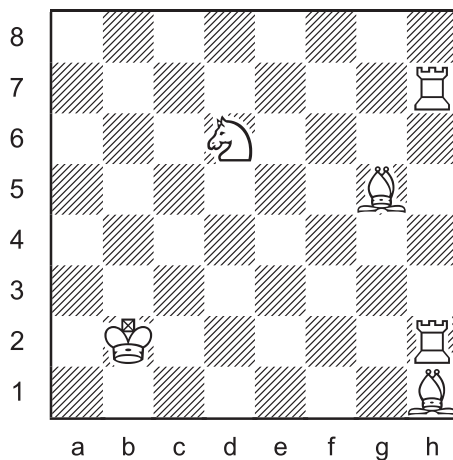
number 135

March 25, 2017

Ever feel outclassed by the silicon beasts? Humbled by their speed and accuracy? Well, here's the remedy. Plug these puzzles into Fritz, and see if it can solve them!



Triple Loyd 62

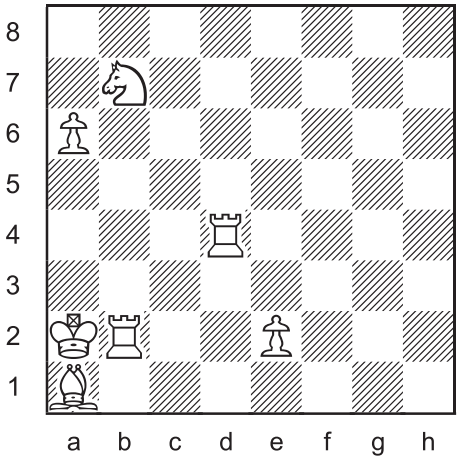


Place the black king on the board so that:

- Black is in checkmate.
- Black is in stalemate.
- White has a mate in 1.

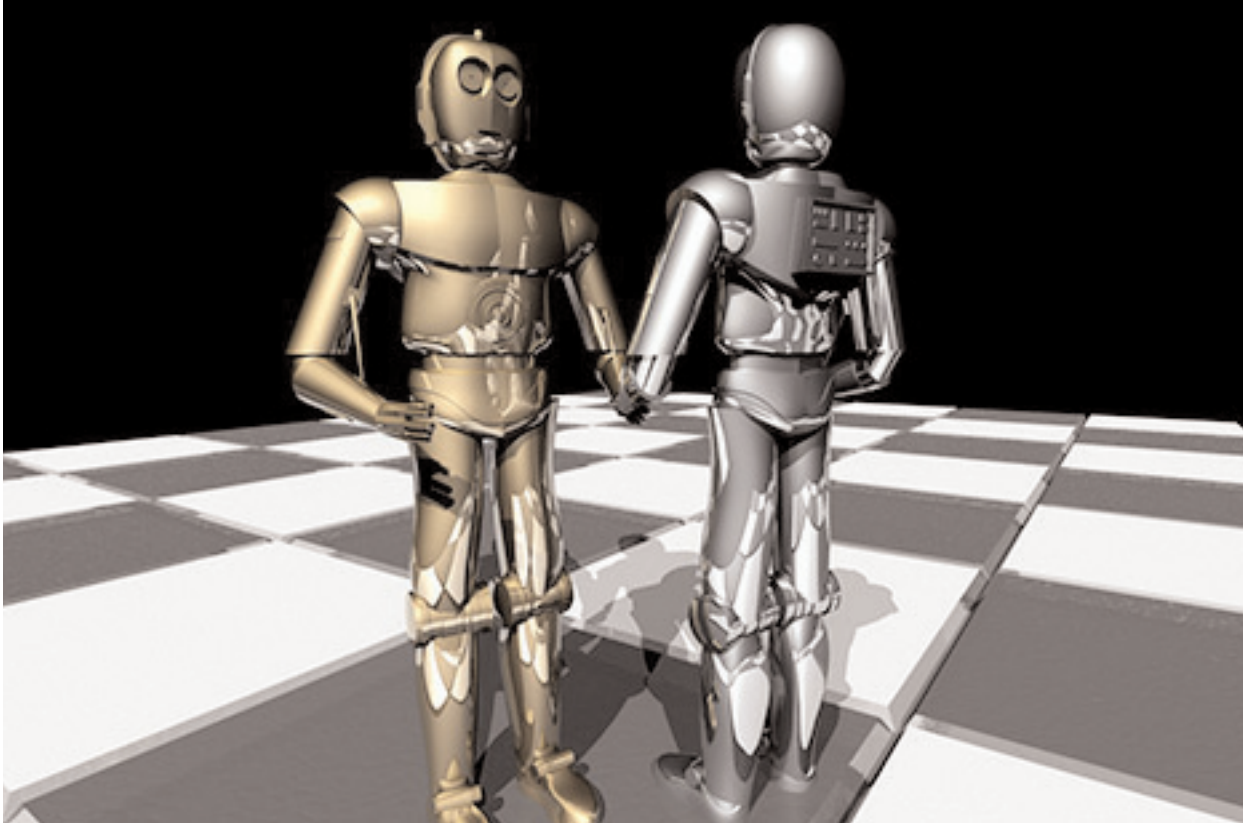
The following loyd was specially composed as a token gesture to this week's android theme.

Triple Loyd 63



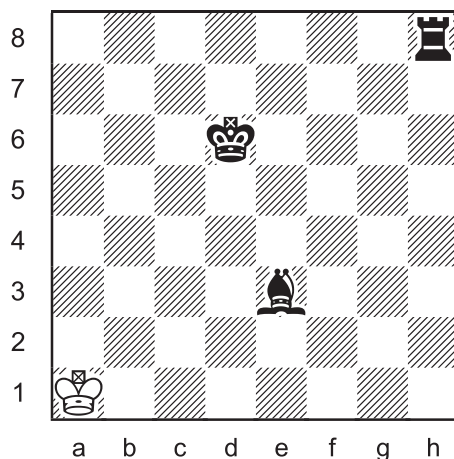
Place the black king on the board so that:

- A. Black is in checkmate.
- B. Black is in stalemate.
- C. White has a mate in 1.

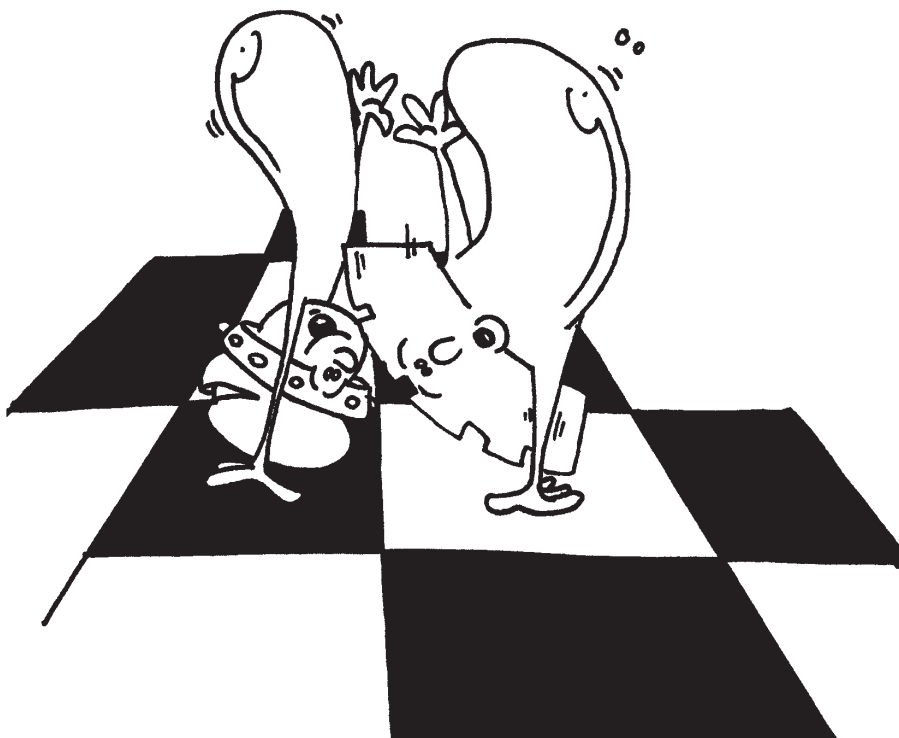


The Illusion of Good Sportsmanship.

Inverted Loyd 39



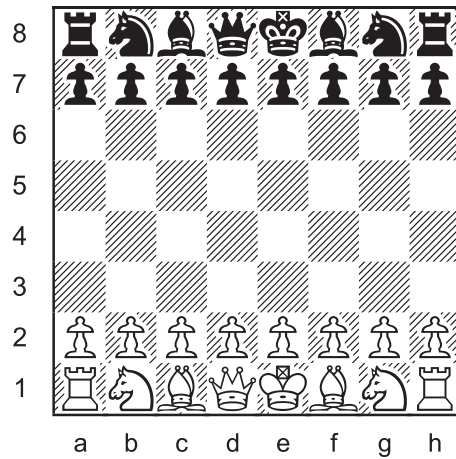
Place a white rook and two bishops on the board so that White has mate in 1.



The goal in our final puzzle is to create a void on the g-file. Some pieces are repositioned, others decommissioned.

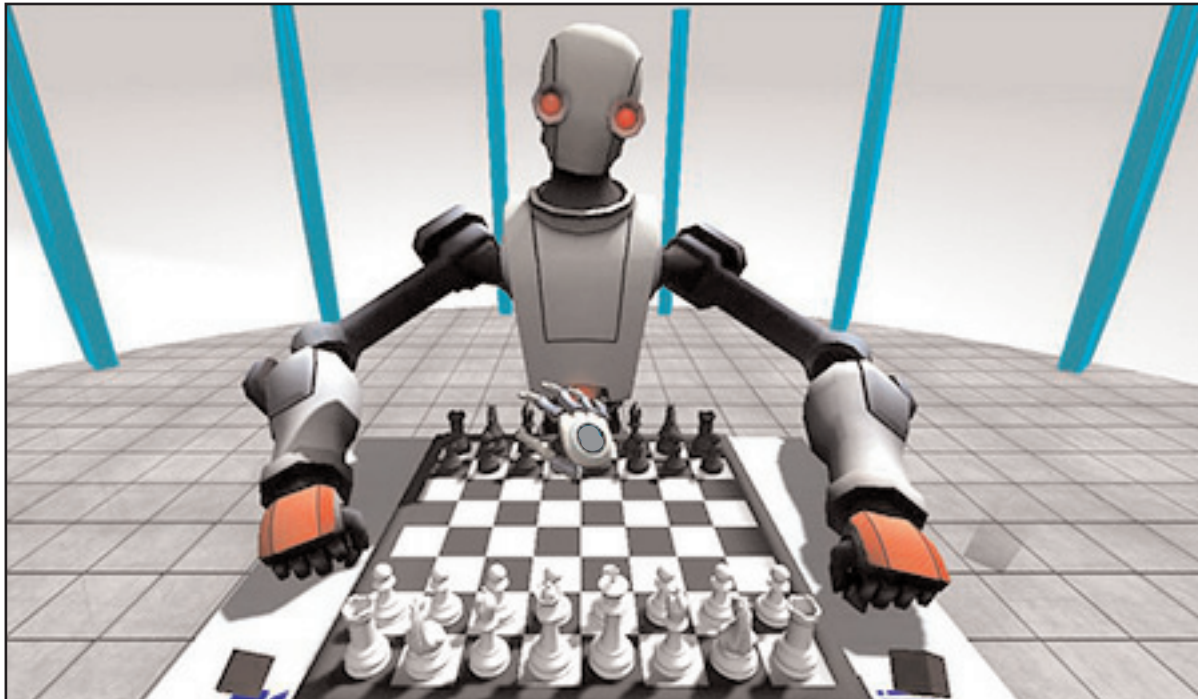
For two more *voids*, see columns 113 and 118 .

Synthetic Game 30



Compose a game that ends
after White's 4th turn
with the g-file empty.

Seven moves to clear the g-file of all pieces. Four by White, three by Black. Can you open the line in time?



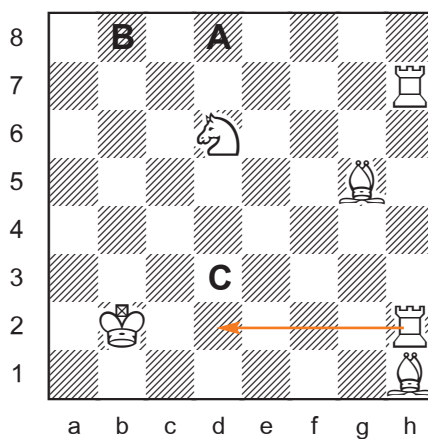
Welcome to the Matrix. Where Chess is the Sole Reality.

SOLUTIONS

All problems by J. Coakley, *Puzzling Side of Chess* (2017).

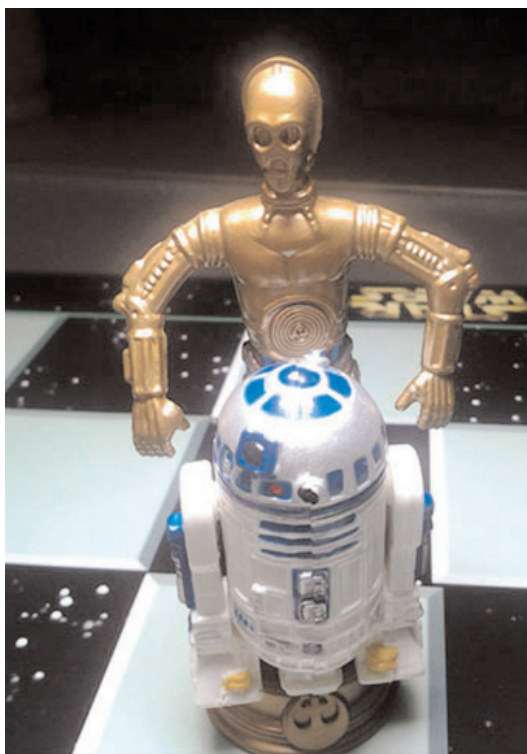
PDF hyperlinks. You can advance to the solution of any puzzle by clicking on the underlined title above the diagram. To return to the puzzle, click on the title above the solution diagram.

Triple Loyd 62

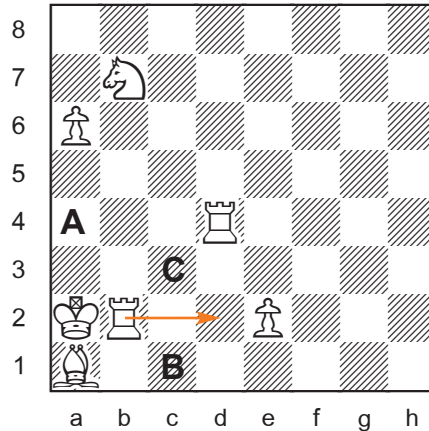


- A. Kd8#
- B. Kb8=
- C. Kd3 (Rd2#)

The mating move in part C could be expressed as “**R to d2**”.
A tribute to the android CP30 and his robotic sidekick R2D2.



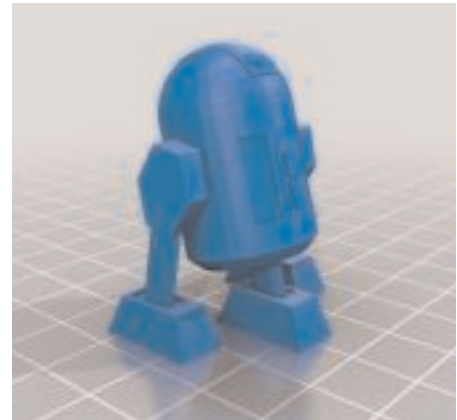
Triple Loyd 63



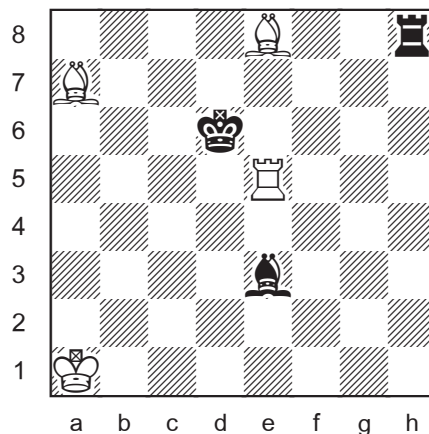
- A. Ka4#
- B. Kc1=
- C. Kc3 (**R2D2#**)

Notation was the compositional task in this puzzle. Creating a position in which Black is mated by R2d2!

Rbd2 is the “preferred” notation according to FIDE Laws, appendix C.10 for a situation in which two rooks on different ranks and files can move to the same square. But in this case, the optional R2d2 is clearly the right choice.



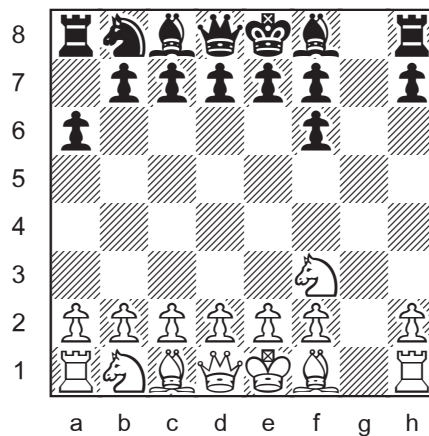
Inverted Loyd 39



Re5, Ba7, Be8 were added.
1.Bb8#

A simple mate, once the pieces are on the right squares!

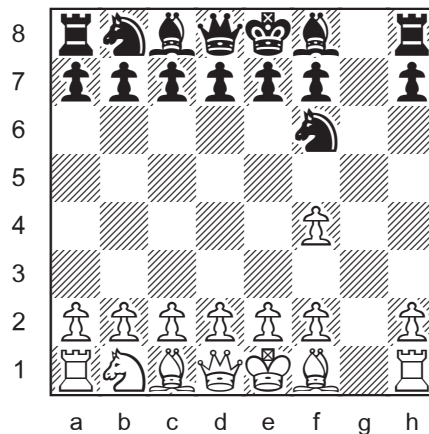
Synthetic Game 30



1.g4 Nf6 2.g5 a6 3.gxf6 gxf6 4.Nf3

The solution is not unique. Black's first two moves can be switched and ...a6 can be replaced by almost any move. Either knight could go to the h-file instead.

Another un-unique solution with the white knight being captured:



1.Nh3 g5 2.Nf4 gxf4 3.g3 Nf6 4.gxf4

Until next time!

© Jeff Coakley 2017. Illustrations by Antoine Duff. All rights reserved.