

THE PUZZLING SIDE OF CHESS

Jeff Coakley

VICTORIA DAY: Smorgasbord XIX

number 137

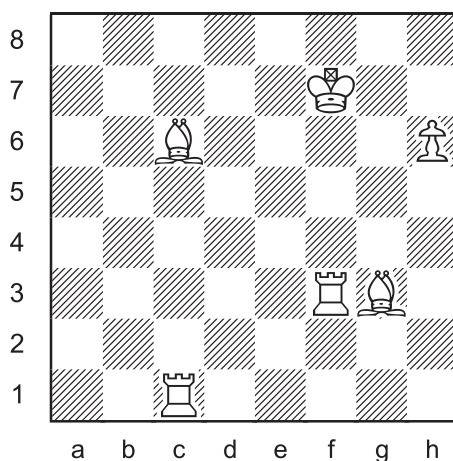
May 20, 2017

This column is the season 3 finale for *The Puzzling Side of Chess*. A long road lies ahead this summer, before the new season begins sometime in September.

But don't worry about getting your weekly fix of puzzles. Previously unarchived columns will be posted each Saturday, many of which were only available in the past to "cafe subscribers".

So on with the show. Our side theme is *Victoria Day*, the holiday which commemorates the reigning sovereign of Canada, held every year on the next to last Monday of May.

Triple Loyd 65



Place the black king on the board so that:

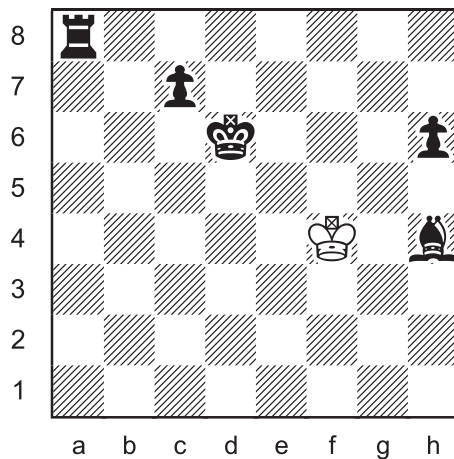
- A. Black is in checkmate.
- B. Black is in stalemate.
- C. White has a mate in 1.

Victoria Day was established in honour of Victoria (1819-1901), the queen of Great Britain, and Canada, for 63 years. The holiday was first celebrated in 1845 on her birthday, May 24.



Queen Victoria 1841 (Charles Brocky)

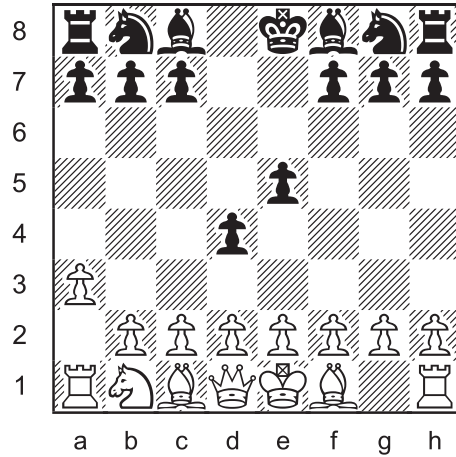
Inverted Loyd 40



Place a white bishop and two knights on the board so that White has mate in 1.

Victoria was married to her first cousin, Prince Albert of Germany. Queen Elizabeth is their great-great granddaughter.

Longer Proof Game 36 (5.5 moves)



This position was reached after White's sixth turn. What were the moves?

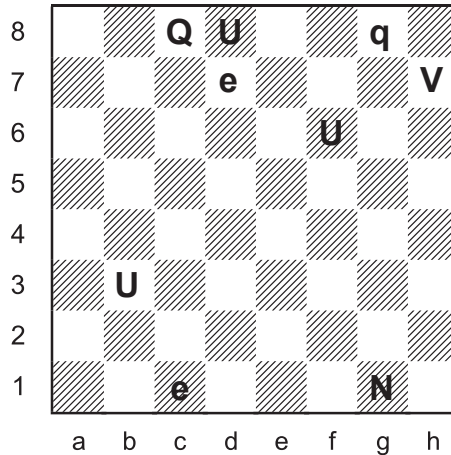
Many places are named after Queen Victoria.

The city Victoria is the provincial capital of British Columbia. One of the oldest settlements in the "Pacific Northwest", it stands at the southwestern corner of Canada on Vancouver Island. Surprisingly, the city Vancouver is not on the island.



Victoria BC

Rebus 08



Each letter represents a different type of piece.
Uppercase is one colour, lowercase is the other.
Determine the position and the last move.

Victoria Island is in the Canadian Arctic. It is the 8th largest island in the world. Part of the island is in Nunavut, part in the Northwest Territories.
Population: 1875.



Victoria Island, Arctic Ocean

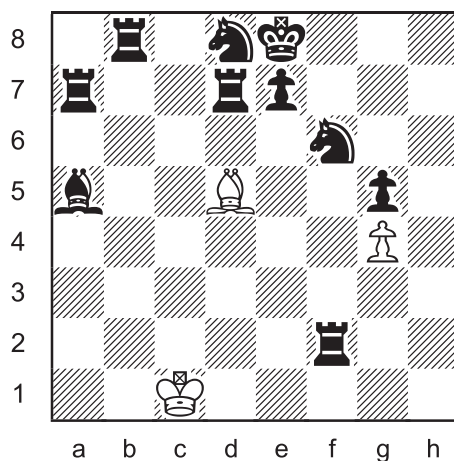
Victoria's father was Prince Edward (1767-1820). He also has an island named for him. The province P.E.I.

Prince Edward Island, current homebase for the *Puzzling Side of Chess*, is the 104th largest island in the world and is linked to mainland Canada by the 13 km Confederation Bridge. It's free to cross onto the island, but there's a \$46 toll to leave!



Victoria-by-the-Sea, PEI

Multi-Wham 29



Series-mate in 26

White plays twenty-six moves
in a row to mate Black.

*Only the last move may give check. Captures
are allowed. White may not place their own king
in check. Black does not get a turn.*

As long as we're discussing Canadian islands, did you know that the city Montreal is an island in the St. Lawrence River?

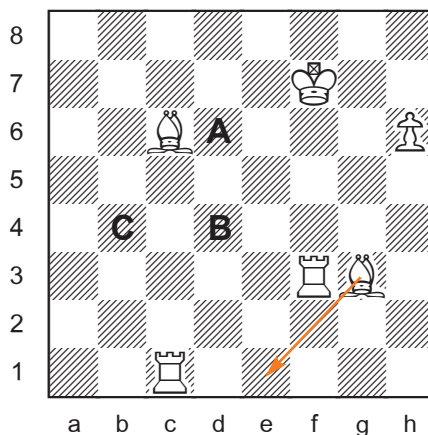
Or how about this bit of Canuckian trivia: The southernmost part of Canada is Pelee Island in Lake Erie. There are 27 American states with territory further north!

SOLUTIONS

All problems by J. Coakley. *Puzzling Side of Chess* (2017). Rebus 8 is a joint composition with Andrey Frolkin.

PDF hyperlinks. You can advance to the solution of any puzzle by clicking on the underlined title above the diagram. To return to the puzzle, click on the title above the solution diagram.

Triple Loyd 65



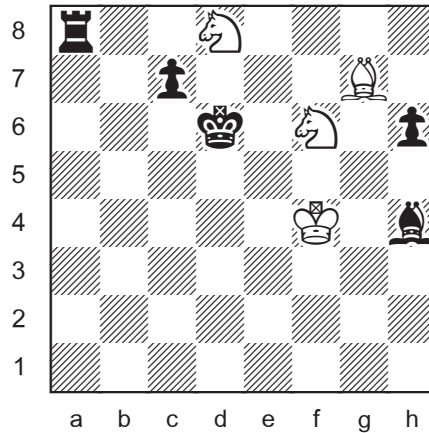
- A. Kd6#
- B. Kd4=
- C. Kb4 (Be1#)

A non-edge-of-the-board criss-cross mate.



Queen Victoria 1835, selfie.

Inverted Loyd 40



Bg7, Nf6, Nd8 were added.

1.Bf8#

Dual purpose knights, controlling the light squares around the black king and obstructing his defenders from blocking the check.

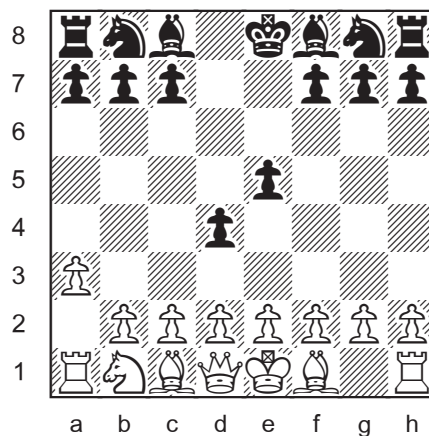
quotes by Queen Victoria

“Give my people plenty of beer, good beer, and cheap beer, and you will have no revolution among them.”

“I think people really marry far too much. It is such a lottery after all, and for a poor woman a very doubtful happiness.”

“I don’t dislike babies, though I think very young ones rather disgusting.”

Longer Proof Game 36 (5.5 moves)



1.Nh3 d5 2.Nf4 d4 3.Nd5 Qxd5 4.a3 Qa2 5.Rxa2 e5 6.Ra1

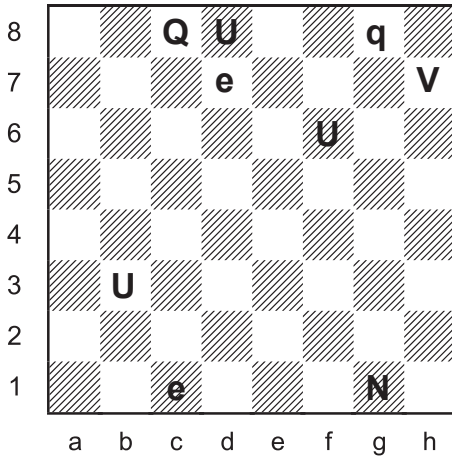
An altogether strange sequence of moves!

Rebus 08

Andrey Frolikin & Jeff Coakley 2017

Puzzling Side of Chess

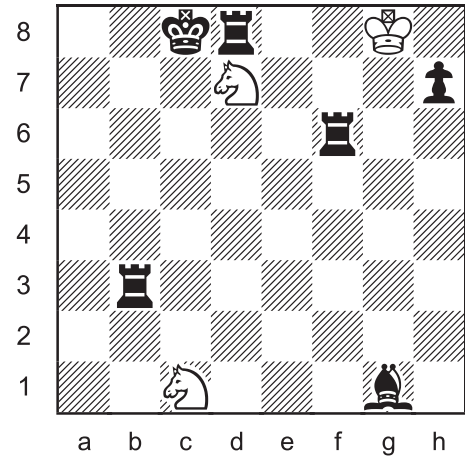
"Queen V"



Q = king
 U = rook
 E = knight
 N = bishop
 V = pawn

caps = black

last move:
 1...0-0-0+



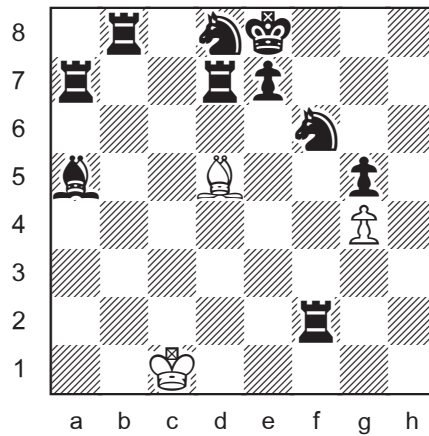
(3 + 6)

- Q = Only letter with one uppercase, one lowercase.
- U ≠ (b3+, d8+) Both kings in check.
- One of the kings is in check by U (d8+, b3+, or f6+).
- E ≠ (d7+) Impossible multiple checks.
- E ≠ (c1+) Impossible multiple checks.
- E ≠ (c1) E on 1st rank.
- E =
- N ≠ (g1+) Impossible multiple checks.
- N ≠ (g1) N on 1st rank.
- N =
- V ≠ (h7+) Impossible multiple checks.
- V =
- U = (d8+) Check.
- Caps = black h7 ≠ white. Both kings in check.
- Last move: 1...0-0-0+ Only way to explain check by on d8.

Minimalist record for fewest pieces (9) in a rebus with the last move *castling queenside*.

For more on rebus minimalism, see chessproblems.ca *Bulletin 11*.

Multi-Wham 29



1.Bb3 Obviously, the white pawn has to promote. So the white king must capture on g5. To accomplish this task, the white bishop must build five bridges.

2.Kb1

3.Ka1

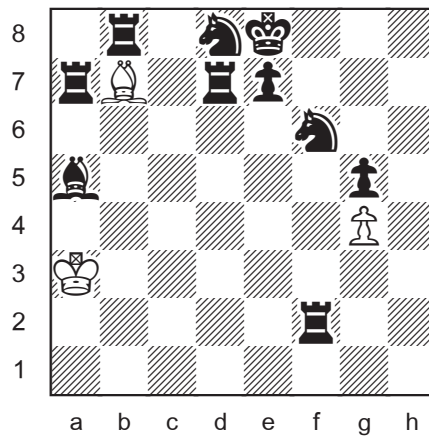
4.Bc2 Bridge 2: crossing the 2nd rank.

5.Ka2

6.Ka3

7.Be4

8.Bb7 Bridge 3: back across the b-file.

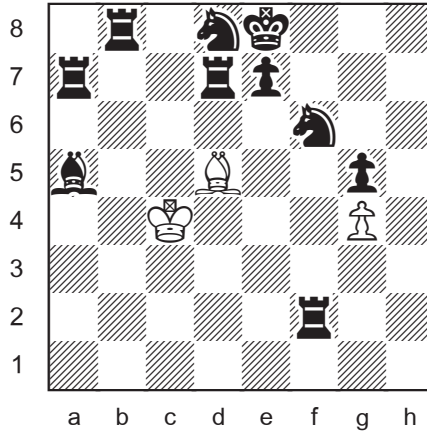


9.Kb3

10.Kc4

11.Bd5

Bridge 4. Spanning the d-file.



12.Kd4

13.Ke5

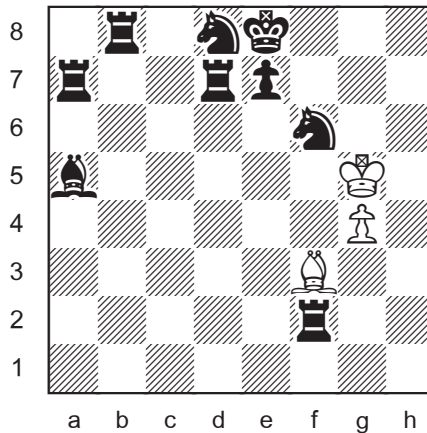
14.Bf3

15.Kf5

16.Kxg5

Bridge 5: the f-file.

Task one complete.



17.Kh6

18.g5

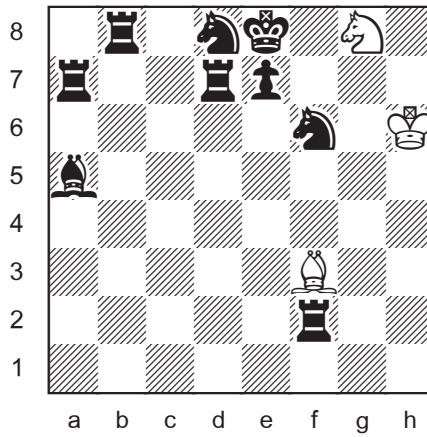
19.g6

20.g7

21.g8=N

Promoting to queen or rook would be check.
There is no mate after a bishop promotion.

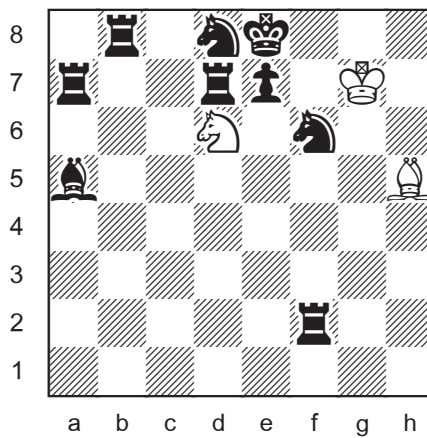




- 22.Kg7
- 23.Nh6
- 24.Nf7
- 25.Bh5
- 26.Nd6#

Preparing an ambush.

Double check and mate.



One final quote by her majesty, Queen Victoria:

“Beware of artists, they mix with all classes of society and are therefore most dangerous.”

Until next time!

© Jeff Coakley 2017. Illustrations by Antoine Duff. All rights reserved.